

EMA GmbH offers high-quality solutions for the optimization of production processes in paper machines.

EMA GmbH delivers products and solutions that ensure a more efficient and productive operation of paper machines. Due to many years of experience and extensive know-how, EMA can guarantee a consistently high product quality.

EMA's product range is characterized by robust design, up-to-date process control, simplest operability, and maintainability and includes products like tail cutters, felt and wire guide controls and tension regulators, and

traversing cleaners.

One of EMA's primary goals is to flexibly and quickly react to customer requirements and to offer its customers a very high service quality.

Paper Machine Components

Felt and Wire Guide Control

EMA felt and wire guide control units are equipped with electromotive adjusting elements with special motors. The electromotive adjusting element consists of a robust cast casing with a slide driven by a trapezoidal spindle. The adjusting element is optionally available for use in wet sections of stainless steel or in dry sections consisting of a steel case with paint system.

The most important advantages:

- Robust design
- Arbitrary mounting position
- Low energy consumption
- Low-maintenance system



Felt and Wire Tension Regulators

The EMA felt and wire tension regulators regulate the specific tension electro-mechanically. They are available as spindle tensioners with straight motion, as well as wire lever tensioners with circular motion.

Advantages:

- Robust design
- Spindle and tubular element are totally enclosed
- Automatic spanning of press felts possible
- Low energy consumption
- Low-maintenance system



Tail Cutter Wet Section

Due to continuous product development for more than 30 years and a technically mature, robust design with simple operability, EMA tail cutters wet section are the first choice in Europe's paper industry. The tail cutters are specially designed and manufactured based on the technical conditions on-site.

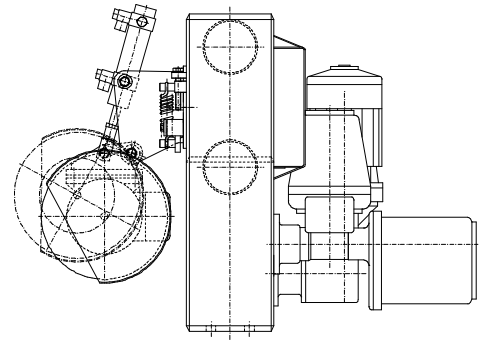
Advantages:

- Robust construction, which has been tested for many years
- Simple operability
- Very high reliability



Tail Cutter Dry Section

EMA tail cutters dry section serve feeding the paper into the dry section of the paper machine. Thereby the dry paper is separated so that a strip is produced, which is later extended into a full width. The tail cutter dry section positions the knife onto the required spot. EMA's tail cutters distinguish themselves by a robust construction well tested for years, simple operability, and very high reliability.



Traversing Cleaner

The EMA cleaning systems are especially configured for wire, press, and dry sections. The traversing cleaner is very well equipped for the use in all areas of the paper machine. The main advantages of the effective surface-covering web-cleaning during production are an increased web lifetime, better dehydration in the wire and press section, an increased efficiency in the drying process, and less break-downs due to coming off stickies.



Advantages:

- Robust design
- Low quantity of water
- No costs for vacuum
- Low energy consumption
- Low-maintenance system

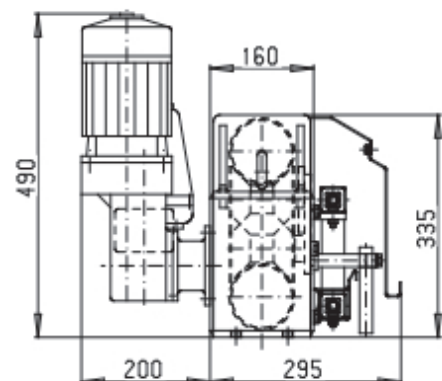


Traversing System for the Application of Chemicals

The EMA traversing systems are based on the basic design of the tail cutter wet end and the traversing cleaning system. Contrary to the traversing cleaning systems with dirt disposal, the traversing systems are designed for the application of chemicals of other substances. Due to various construction types, it is possible to address the individual needs and requirements of our customers and offer them ideal solutions.

Advantages of the application of chemicals to the entire surface:

- Controlled application of substances compared to spray pipes
- If required, selective application
- Adjustable forward feed
- Adaptation to the application system



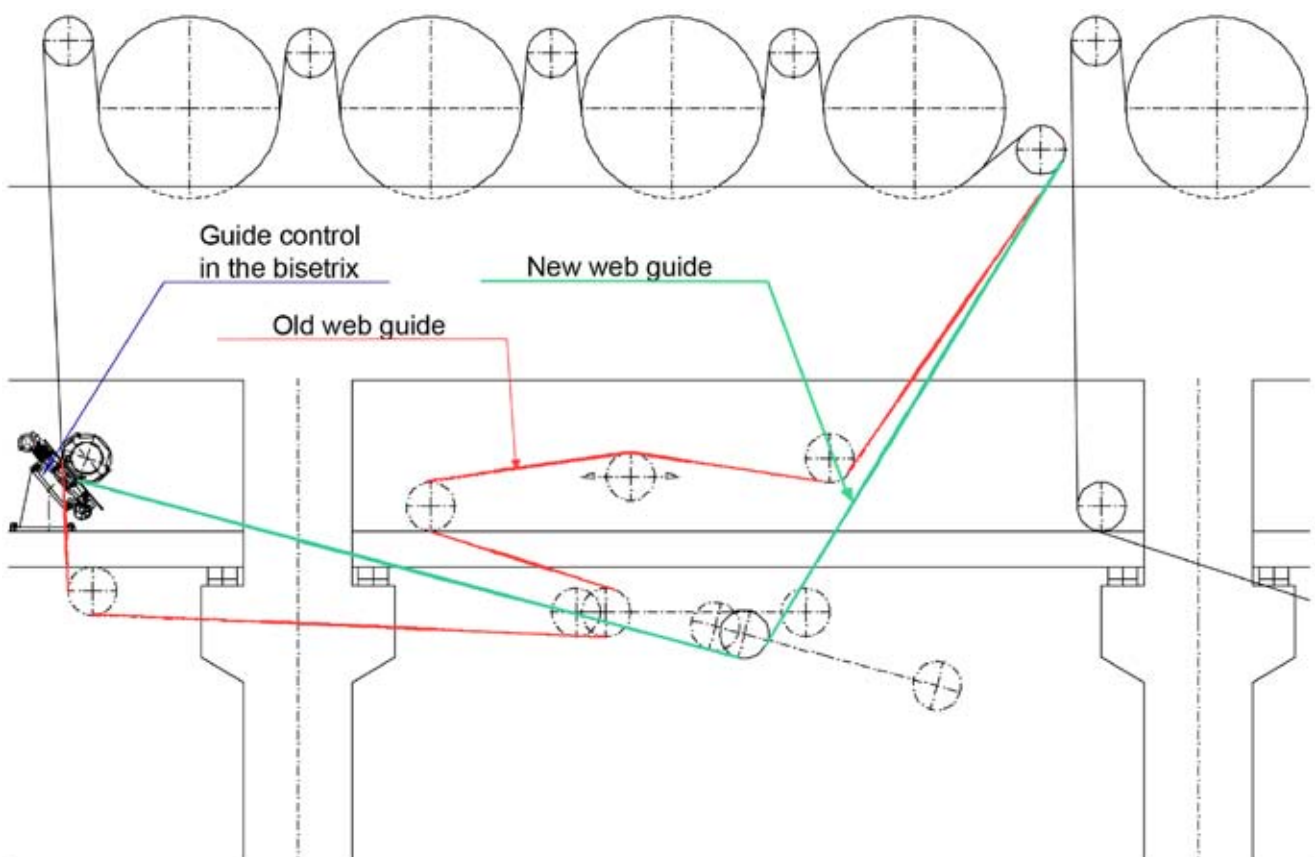
Optimization of Web Guides

Dry Section Optimization

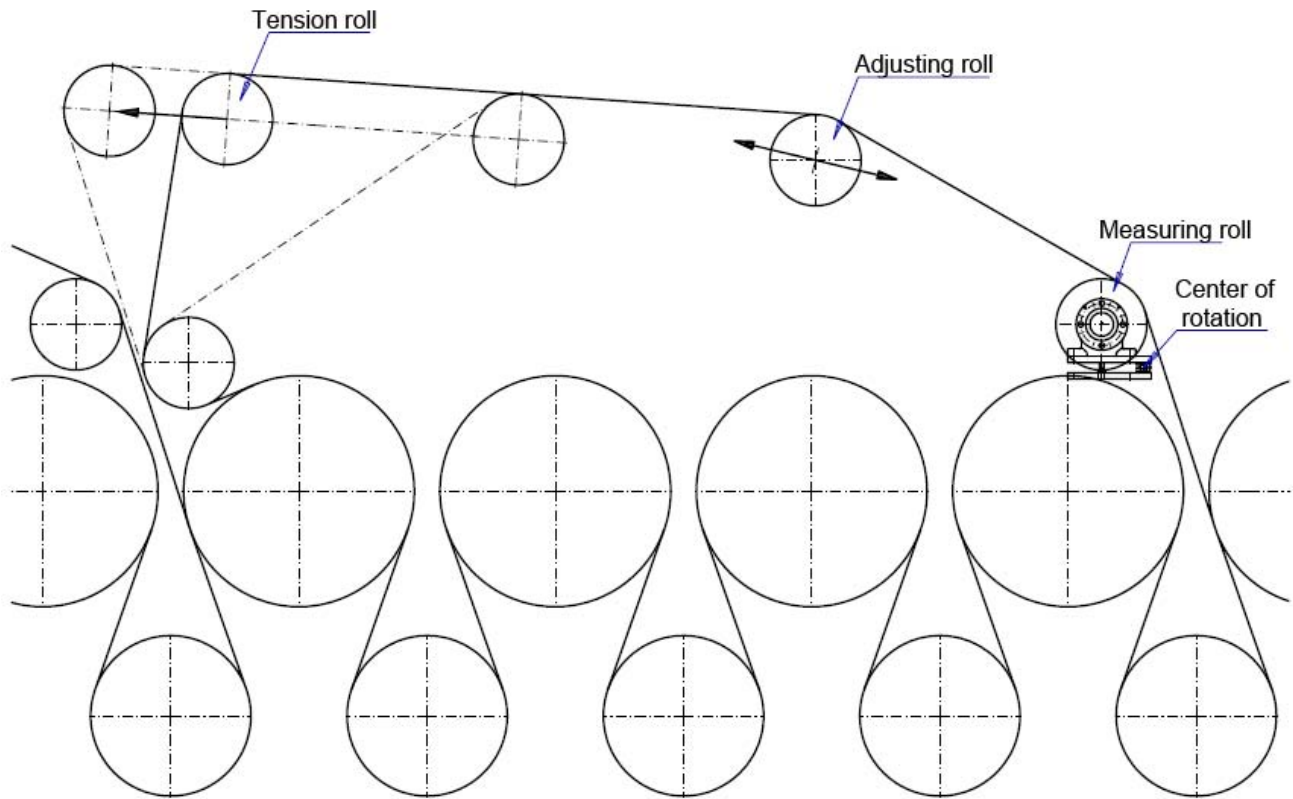
EMA provides solutions for optimizing the dry section, in order to reduce the number of guide rolls from 10 to 7 guide rolls. In addition, no roll has contact to the paper side of the web.

Advantages:

- Reduced number of guide rolls
- Only internal guide rolls
- Wrap angle of adjusting rolls: about 80 degrees



Existing Situation: Separate Guide and Tension Measuring Roll



Optimized Situation: Guide Roll = Tension Measuring Roll

